

Pressure Product Catalog



water friendly solutions

oasiscoolers.com
800.646.2747


OASIS[®]
OASIS INTERNATIONAL



Barrier-Free Versacooler® II and Versacooler II split level



> P8AC



Standard Features P8AC

- Built-in 100 Micron Strainer Stops Particles Before they Enter the Waterway
- ADA Compliant for Both Adult or Child When Properly Installed
- Waterways are Lead-Free in Materials and Construction
- Stainless Steel Top
- Flexible Bubbler Guard
- Heavy Duty Galvanized Steel Frame
- High Efficiency Cooling Tank and Coil
- Refrigerant R-134a
- ANSI/NSF 61
- External Stream Height Adjustment
- Sandstone Powder Coat Finish Standard. Optional Brushed Stainless Steel, Regency Bronze and Powder Coat in Various Colors.
- Four Push Pad Activation

> PF8AC



Standard Features PF8AC includes All of the P8AC features PLUS

- VersaFilterSystem for Taste, Odor and Chlorine Reduction, Lead Reduction, and Cyst Reduction

> PV8AC - Vandal Resistant



Standard Features PV8AC includes All of the P8AC features PLUS

- Brushed Stainless Steel Finish
- Vandal Resistant Front Push Button
- Vandal Resistant Fasteners
- Galvanized Steel Louver and Bottom Screens

> P8ACEE



Standard Features P8ACEE includes All of the P8AC features PLUS

- Sensor Equipped for Automatic Operation. Water Flow Stops After 30 seconds if User Does Not Move Away.

> Universal Split Level

One Box, One Cooler, One Install.*

Can be installed left low and right high



Can also be installed left high and right low



The Advantage of Split Level

Split-Level serves both children and adults by adding a fountain to the side for two-level dispensing of drinking water.

*Adapter Bracket Part 035421-001 for Replacing P8AM with a P8AC.
Two Required for Split Level Units.

Model	50° F Drinking Water/90° F Ambient Air Temp*			Hot'N Cold™ Model	115 Volts, 60 HZ			Glass Filler Acc. Option	Cabinet Color Option	Net Wt. Approx.
	Rated Capacity GPH	Base Rate GPH	Pre-Cooler		Compr. HP	Full Load Amps	Rated Watts			
P8AC**	8.0	8.0	No	No	1/4	4.4	500	Yes	Yes	59 lbs.
PAC	Fountain Only							Yes	Yes	25 lbs.
P8ACSL**	8.0	8.0	No	No	1/4	4.4	500	Yes	Yes	84 lbs.
PACSL	Fountain Only							Yes	Yes	50 lbs.
PF8AC**	8.0	8.0	No	No	1/4	4.4	500	Yes	Yes	60 lbs.
PFAC	Fountain Only							Yes	Yes	26 lbs.
PF8ACSL**	8.0	8.0	No	No	1/4	4.4	500	Yes	Yes	84 lbs.
PFACSL	Fountain Only							Yes	Yes	50 lbs.
P8ACEE	8.0	8.0	No	No	1/4	4.4	500	Yes	Yes	59 lbs.
P8ACSLLEE	8.0	8.0	No	No	1/4	4.4	500	Yes	Yes	84 lbs.
PV8AC**	8.0	8.0	No	No	1/4	4.4	500	No	No	56 lbs.
PV8ACSL**	8.0	8.0	No	No	1/4	4.4	500	No	No	84 lbs.

*Air Conditioning and Refrigeration Institute Standard Rating Condition 80°F inlet water temperature. **Special Export Models Available, Operable on 220-240 Volt, 50 Hz, UL and CSA Certification not Applicable.

Barrier-Free Versacooler® II

With Oasis Energy and Water Conservation Technology



All the features of the Versacooler II models with New High Efficiency cooling system



Ideal for Green Specified construction

New High Efficiency positive start compressor and cooling system with Water Saver Bubbler



Energy & Water Conservation Model

Model	50° F Drinking Water/90° F Ambient Air Temp*			Hot'N Cold™ Model	115 Volts, 60 HZ			Glass Filler Acc. Option	Cabinet Color Option	Net Wt. Approx.
	Rated Capacity GPH	Base Rate GPH	Pre-Cooler		Compr. HP	Full Load Amps	Rated Watts			
PG8AC**	8.0	8.0	No	No	1/4	4.4	500	Yes	Yes	59 lbs.
PGAC	Fountain Only							Yes	Yes	25 lbs.
PG8ACSL**	8.0	8.0	No	No	1/4	4.4	500	Yes	Yes	84 lbs.
PGACSL	Fountain Only							Yes	Yes	50 lbs.
PGF8AC**	8.0	8.0	No	No	1/4	4.4	500	Yes	Yes	60 lbs.
PGFAC	Fountain Only							Yes	Yes	26 lbs.
PGF8ACSL**	8.0	8.0	No	No	1/4	4.4	500	Yes	Yes	84 lbs.
PGFACSL	Fountain Only							Yes	Yes	50 lbs.
PG8ACEE	8.0	8.0	No	No	1/4	4.4	500	Yes	Yes	59 lbs.
PG8ACSL EE	8.0	8.0	No	No	1/4	4.4	500	Yes	Yes	84 lbs.
PGV8AC**	8.0	8.0	No	No	1/4	4.4	500	No	No	56 lbs.
PGV8ACSL**	8.0	8.0	No	No	1/4	4.4	500	No	No	84 lbs.

*Air Conditioning and Refrigeration Institute Standard Rating Condition 80°F inlet water temperature.

**Special Export Models Available, Operable on 220-240 Volt, 50 Hz, UL and CSA Certification not Applicable.

VersaFiller®

With AQUA POINTE™ Bottle Filler Technology



Oasis Aqua Pointe VersaFiller unit can be retrofitted to existing P8AC and P8AM coolers or purchased as a complete top and bottom combination. Enjoy the best of both water options: refreshing fountain water and a bottle filler unit for refillable bottles. The VersaFiller alcove and activation button contain Freshield®, which utilizes a silver based antimicrobial compound. This is ideal for work-place settings, schools, university locations, and any public building

> P8SBF

> PWSBF



The PWSBF VersaFiller is designed to retrofit on existing Oasis P8AC and P8AM pressure cooler models

Available Oasis Versacooler® II Models with VersaFiller Combination

P8AC with VersaFiller.....	P8SBF	PAC with VersaFiller	PSBF
P8ACSL with VersaFiller.....	P8SBFSL	PACSL with VersaFiller . . .	PSBFSL
PG8AC with VersaFiller.....	PG8SBF	PGAC with VersaFiller	PGSBF
PG8ACSL with VersaFiller....	PG8SBFSL	PGACSL with VersaFiller . . .	PGSBFSL
PF8AC with VersaFiller.....	PF8SBF	PFAC with VersaFiller	PFSBF
PF8ACSL with VersaFiller.....	PF8SBFSL	PFACSL with VersaFiller . . .	PFSBFSL
PV8AC with VersaFiller.....	PV8SBF	PVAC with VersaFiller	PVSBF
PV8ACSL with VersaFiller....	PV8SBFSL	PVACSL with VersaFiller . . .	PVSBFSL

Model	50° F Drinking Water/90° F Ambient Air Temp*			Hot'N Cold™ Model	115 Volts, 60 HZ			Glass Filler Acc. Option	Cabinet Color Option	Net Wt. Approx.
	Rated Capacity GPH	Base Rate GPH	Pre-Cooler		Compr. HP	Full Load Amps	Rated Watts			
P8SBF	8.0	8.0	No	No	1/4	4.4	500	No	Yes	69 lbs.
PWSBF	Fountain Only		No	No				No	Yes	10 lbs.

*Air Conditioning and Refrigeration Institute Standard Rating Condition 80°F inlet water temperature.

AQUA POINTE®

Sports Bottle Filler



> MWSBF/MWGSBF

Also Available in 8 and 12 GPH Refrigerated Water Capacities



Standard Features MWSBF

- Built-in 100 Micron Strainer Stops Particles Before they Enter the Waterway
- Waterways are Lead-free in Materials & Construction
- Heavy Duty steel frame
- Product Certified by NSF to NSF/ANSI Standard 61, including AB1953
- High Efficiency cooling tank and coil
- Refrigerant R-134a
- Standard cabinet finish: Brushed Stainless Steel. Optional cabinet finish: Regency Bronze

> M8SBF/M8GSBF

Also Available in 12 GPH Refrigerated Water Capacities

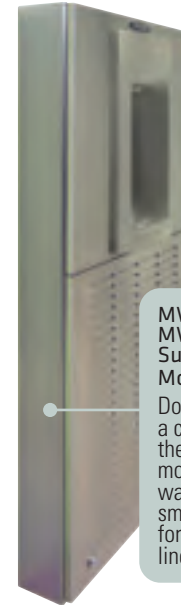


Standard Features M8SBF Includes all the MWSBF features PLUS

- Full M8SBF with Companion M8WR Radii Unit

> MWSMSBF/MWSMGSBF

Also Available in 8 and 12 GPH Refrigerated Water Capacities



MWSMSBF/MWSMGSBF Surface Mount

Does not need a cut-out for the unit to mount in the wall, only a small cut-out for the water line and drain.

Standard Features MWSMSBF Includes all the MWSBF features PLUS

- Surface Mount Frame Assembly

Note: chiller units sold with these models must be remotely located, as they do not fit into the housing of the unit, or inside the wall cavity of a typical stud wall.



Freshield®

Key Aqua Pointe bottle filler molded components contain Freshield®, which utilizes a silver-based antimicrobial compound that reduces the growth of micro-organisms and mildew to protect the surfaces from discoloration, odors and degradation.

Model	50° F Drinking Water/90° F Ambient Air Temp*			Hot'N Cold™ Model	115 Volts, 60 HZ			Auto-Off Water Flow	Cabinet Color Option	Net Wt. Approx.
	Rated Capacity GPH	Base Rate GPH	Pre-Cooler		Compr. HP	Full Load Amps	Rated Watts			
MWSBF	Fountain Only		No	No				No	Yes	26 lbs.
MW8SBF	8.0	8.0	No	No	1/4	4.8	550	No	Yes	78 lbs.
MW12SBF	12.0	12.0	No	No	1/3	5.4	620	No	Yes	78 lbs.
M8SBF	8.0	8.0	No	No	1/4	4.8	550	No	Yes	161 lbs.
M12SBF	12.0	12.0	No	No	1/3	5.4	620	No	Yes	161 lbs.
MWSMSBF	Fountain Only							No	Yes	36 lbs.
MWSM8SBF	8.0	8.0	No	No	1/4	4.8	550	No	Yes	80 lbs.
MWSM12SBF	12.0	12.0	No	No	1/3	5.4	620	No	Yes	80 lbs.
MWGSBF	Fountain Only		No	No				Yes	Yes	26 lbs.
MW8GSBF	8.0	8.0	No	No	1/4	4.8	550	Yes	Yes	78 lbs.
MW12GSBF	12.0	12.0	No	No	1/3	5.4	620	Yes	Yes	78 lbs.
M8GSBF	8.0	8.0	No	No	1/4	4.8	550	Yes	Yes	161 lbs.
M12GSBF	12.0	12.0	No	No	1/3	5.4	620	Yes	Yes	161 lbs.
MWSMGSBF	Fountain Only							Yes	Yes	36 lbs.
MWSM8GSBF	8.0	8.0	No	No	1/4	4.8	550	Yes	Yes	80 lbs.
MWSM12GSBF	12.0	12.0	No	No	1/3	5.4	620	Yes	Yes	80 lbs.

Industry Standard Rating Condition 80° F inlet water temperature. Specifications subject to change without notice

Barrier-Free Versacooler II

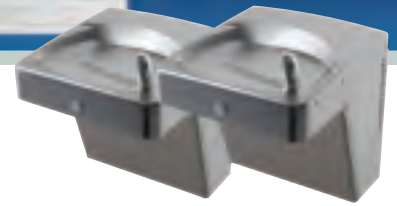


Vandal resistant 14 gauge stainless steel

- 14 gauge stainless steel construction
- One-piece vandal resistant bubbler keyed into position
- Single vandal resistant mechanical activation
- Stream height adjustment
- Heavy duty galvanized steel frame and ventilation screens



PV8AC-14G



PV8ACSL-14G (split-level)

Model	50° F Drinking Water/90° F Ambient Air Temp*			Hot'N Cold™ Model	115 Volts, 60 HZ			Glass Filler Acc. Option	Cabinet Color Option	Net Wt. Approx.
	Rated Capacity GPH	Base Rate GPH	Pre-Cooler		Compr. HP	Full Load Amps	Rated Watts			
PV8AC-14G	8.0	8.0	No	No	1/4	4.4	500	No	No	75 lbs.
PV8ACSL-14G	8.0	8.0	No	No	1/4	4.4	500	No	No	145 lbs.

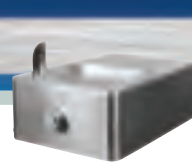
*Air Conditioning and Refrigeration Institute Standard Rating Condition 80°F inlet water temperature.

Modular Drinking Fountains



Vandal resistant 14 gauge stainless steel

- 14 gauge stainless steel construction
- One-piece vandal resistant bubbler keyed into position
- Single vandal resistant mechanical activation
- Stream height adjustment
- Brass P-Trap
- Vandal resistant bit



F140PM-14G



MSSLPM-14G (split-level)

Model	Style	Net Wt. Approx.
F140PM-14G	Modular	22 lbs.
MSSLPM-14G	Modular	43 lbs.

Standard Modular Drinking Fountains



Standard Features

- > ADA Compliant When Properly Installed. See Modular Coolers and Radii Modular Coolers Sections for Restrictions.
- > A Light Press of the Push Pad Activates the Water Flow.
- > Built in 100 Micron Strainer Stops Particles Before They Enter the Waterway
- > Flexible Bubbler Guard
- > Waterways are Lead-free in Materials and Construction
- > Brushed Stainless Steel Finish with Heavy-duty Galvanized Steel Mounting Frame
- > Modular Fountains Include Back Panel(s) and Mounting Frame(s)
- > Frostproof Fountains Include Back Panel and Control Box Assembly
- > Limited One Year Warranty

Finishes

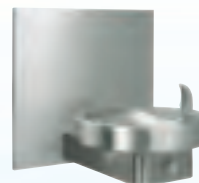
- > Standard Finish in Stainless Steel. Optional Finish in Regency Bronze.



MMRSL



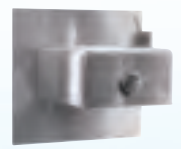
MSSLPM



M140R



M140PM



M110PM

Model	Style	Net Wt. Approx.
M140R	Modular	18 lbs.
MMRSL	Modular	64 lbs.
M110RFZ	Frostproof Fountain	43 lbs.
M140RFZ	Frostproof Fountain	46 lbs.

Model	Style	Net Wt. Approx.
M110PM	Modular	20 lbs.
M140PM	Modular	29 lbs.
M110FZ	Frostproof Fountain	43 lbs.
M140FZ	Frostproof Fountain	46 lbs.
MSSLPM	Modular	59 lbs.

*Photos may not show standard bubbler. Check with customer service.

Radii™ Modular Coolers



M8CR



M8CREE



M8WR



M8WREE

Standard Features

- > ADA Compliant When Installed in an Alcove or With Right and Left Wing Walls
- > A Light Press of the Push Pad Activates the Water Flow (non-EE models only)
- > Built-in 100 Micron Strainer Stops Particles Before they Enter the Waterway
- > Flexible Bubbler Guard
- > Waterways are Lead-free in Materials and Construction
- > Brushed Stainless Steel Finish (Optional Finish Regency Bronze)
- > Refrigerant R-134a
- > Heavy Duty Galvanized Steel Mounting Frame
- > High-Efficiency Cooling System
- > Electric Eye Models are Sensor Equipped for Automatic Operation. Water Flow Stops After 30 Seconds if User Does Not Move Away
- > Split level models are field reversible
- > Limited Five Year Warranty on Chiller
- > Limited One Year Warranty on Bowl and Fountain

Model	50° F Drinking Water/90° F Ambient Air Temp*			Hot'N Cold™ Model	115 Volts, 60 HZ			Glass Filler Acc. Option	Cabinet Color Option	Net Wt. Approx.
	Rated Capacity GPH	Base Rate GPH	Pre-Cooler		Compr. HP	Full Load Amps	Rated Watts			
M8CR**	8.0	8.0	No	No	1/4	4.8	550	No	Yes	135 lbs.
M8CREE	8.0	8.0	No	No	1/4	4.8	550	No	Yes	135 lbs.
M8WR**	8.0	8.0	No	No	1/4	4.8	550	No	Yes	99 lbs.
M8WREE	8.0	8.0	No	No	1/4	4.8	550	No	Yes	99 lbs.

Industry Standard Rating Condition 80° F inlet water temperature. Specifications subject to change without notice

Modular Coolers



M8SBPM



M8SCPM

Standard Features

- > ADA Compliant when M8SCPM and M8SCEE are Installed with Right Side Wing Wall or Apron.
- > A Light Press of the Push Pad Activates the Water Flow (Non-EE models Only)
- > Built-in 100 Micron Strainer Stops Particles Before they Enter the Waterway
- > Electric Eye Models are Sensor Equipped for Automatic Operation. Water Flow Stops After 30 Seconds if User Does Not Move Away.
- > Brushed Stainless Steel Finish Standard. Optional Regency Bronze Finish.
- > Flexible Bubbler Guard
- > Waterways are Lead-free in Materials and Construction
- > Refrigerant R-134a
- > Heavy Duty Galvanized Steel Mounting Frame
- > High-Efficiency Cooling System
- > Split level models are field reversible
- > Limited Five Year Warranty

Model	50° F Drinking Water/90° F Ambient Air Temp*			Hot'N Cold™ Model	115 Volts, 60 HZ			Glass Filler Acc. Option	Cabinet Color Option	Net Wt. Approx.
	Rated Capacity GPH	Base Rate GPH	Pre-Cooler		Compr. HP	Full Load Amps	Rated Watts			
M8SBEE	8.0	8.0	No	No	1/4	4.8	550	No	Yes	96 lbs.
M8SBPM	8.0	8.0	No	No	1/4	4.8	550	No	Yes	96 lbs.
M8SCEE	8.0	8.0	No	No	1/4	4.8	550	No	Yes	131 lbs.
M8SCPM	8.0	8.0	No	No	1/4	4.8	550	No	Yes	131 lbs.

Industry Standard Rating Condition 80° F inlet water temperature. Specifications subject to change without notice

*Photos may not show standard bubbler. Check with customer service.

Fully Recessed Water Coolers



P12FPMCD



P8FPM

Wall installation is particularly appropriate for schools, hospitals, public lobbies, and office corridors. 8 or 12 GPH capacity. The basin provides plenty of headroom.

Models

- > Models P8FPM and P12FPMCD Deliver 8 or 12 Gallons of Chilled Drinking Water Per Hour by Simple Touch to the Push Button.

Standard Features

- > Waterways are Lead-Free in Materials and Construction
- > Stainless Steel Basin and Grille
- > Heavy-Gauge Galvanized Steel Wall Mounting Sleeve
- > High-Efficiency Cooling Tank and Coil
- > Refrigerant R-134a
- > Limited 5 Year Warranty

Installation

- > Prior to Roughing-In, Consult Local, State and Federal Codes for Proper Mounting Height
- > Wall Mounting Sleeve is Furnished for Easy Installation

Colors

- > Standard Finish in Stainless Steel. Optional Finish in Regency Bronze.

Accessories

- > Glass/Carafe Filler, Factory Installed
- > Cup Dispenser Component. Integral Unit in Matching Stainless Steel Includes Cup Filler, Cup Dispenser and Disposer. Combined Units of Water Cooler and Cup Filler Available as Models P8FPMCD and P12FPMCD

Model	50° F Drinking Water/90° F Ambient Air Temp*			Hot'N Cold™ Model	115 Volts, 60 HZ			Glass Filler Acc. Option	Cabinet Color Option	Net Wt. Approx.
	Rated Capacity GPH	Base Rate GPH	Pre-Cooler		Compr. HP	Full Load Amps	Rated Watts			
P8FPM**	8.0	8.0	No	No	1/4	4.8	550	Yes	Yes	92 lbs.
P12FPM**	12.0	12.0	No	No	1/3	5.4	620	Yes	Yes	96 lbs.
P8FPMCD**	8.0	8.0	No	No	1/4	4.8	550	Yes	Yes	167 lbs.
P12FPMCD**	12.0	12.0	No	No	1/3	5.4	620	Yes	Yes	168 lbs.

*Air Conditioning and Refrigeration Institute Standard Rating Condition 80° F inlet water temperature. **Special export models available, operable on 220-240 volts, 50 Hertz. UL and CSA certification not applicable.

Semi-Recessed and Simulated Semi-Recessed Water Coolers



PLF8S



PLF8SM

Attractive 19" high stainless steel backsplash keeps walls clean. Slim design extends only 9 1/2" from the wall, with no wall recessing necessary (SM models only). Available in cold water capacities of 8 and 14 GPH. Semi-Recessed cooler includes wall-mounting frame.

Standard Features

- > Waterways are Lead-Free in Materials and Construction
- > Dial-A-Drink® Bubbler
- > Stainless Steel Top

- > Welded, Heavy-Gauge Galvanized Steel Frame
- > High-Efficiency Cooling Tank and Coil
- > Refrigerant R-134a
- > Limited 5 Year Warranty

Installation

- > Prior to Roughing-In, Consult Local, State and Federal Codes for Proper Mounting Height
- > Shipped with Complete Instructions and Wall Mounting Brackets

- > Removable Panels Provide Easy Access for Installation
- > Optional Steel Bracket Available for Stud/Masonry Walls

Colors

- > Standard Cabinet Finish in Sandstone
- > Optional Finishes Available Include Stainless Steel, Regency Bronze and Powder Coat in Various Colors

Accessories

- > Glass/Carafe Fillers: Factory Installed Models PLF8S, PLF14S (030239-002)

Model	50° F Drinking Water/90° F Ambient Air Temp*			Hot'N Cold™ Model	115 Volts, 60 HZ			Glass Filler Acc. Option	Cabinet Color Option	Net Wt. Approx.
	Rated Capacity GPH	Base Rate GPH	Pre-Cooler		Compr. HP	Full Load Amps	Rated Watts			
PLF8SM	8.0	8.0	No	No	1/5	4.3	500	No	Yes	67 lbs.
PLF14SM	14.0	7.6	Yes	No	1/5	4.3	500	No	Yes	69 lbs.
PLF8S	8.0	8.0	No	No	1/5	4.6	500	Yes	Yes	71 lbs.
PLF14S	14.0	8.0	Yes	No	1/5	4.6	500	Yes	Yes	77 lbs.

*Air Conditioning and Refrigeration Institute Standard Rating Condition 80° F inlet water temperature.

Free Standing Coolers



P3CP



PLF13P



P8FA



PLF20FACP
P16FAWHDCP
PLF16FAW

Standard Features

- > Waterways are Lead-Free in Materials and Construction
- > Dial-A-Drink® Bubbler
- > Stainless Steel Top
- > Galvanized Steel Frame (FA Models)
- > High-Efficiency Cooling Tank and Coil
- > Refrigerant R-134a
- > Heavy-Gauge Steel Cabinet (P Models)
- > Standard Finish Sandstone Powder Coat. Optional Finish in Brushed Stainless Steel and Powder Coat in Various Colors.
- > Water Cooled Condenser Models for Special Applications and Hazardous Conditions
- > Limited 5 Year Warranty

Model	50° F Drinking Water/90° F Ambient Air Temp*			Hot 'N Cold™ Model	115 Volts, 60 HZ			Glass Filler Acc. Option	Cabinet Color Option	Net Wt. Approx.
	Rated Capacity GPH	Base Rate GPH	Pre-Cooler		Compr. HP	Full Load Amps	Rated Watts			
Free Standing Models										
P3CP**	3.0	3.0	No	No	1/4	4.4	500	Yes	Yes	66 lbs.
P5CP	5.0	5.0	No	No	1/4	4.4	500	Yes	Yes	69 lbs.
P10CP**	10.0	10.0	No	No	1/4	4.4	500	Yes	Yes	70 lbs.
Against-A-Wall or Free-Standing Models										
P8FA	8.0	8.0	No	No	1/4	4.4	500	Yes	Yes	94 lbs.
PLF8FAH†	8.0	8.0	No	Yes	1/4	8.9	900	No	Yes	98 lbs.
P14FA**	14.0	8.0	Yes	No	1/4	4.4	500	Yes	Yes	96 lbs.
PLF14FAH†	14.0	8.0	Yes	Yes	1/4	8.9	900	No	Yes	99 lbs.
Free Standing Heavy Duty Water Coolers										
PLF7P	7.0	3.5	Yes	No	1/4	4.4	500	Yes	Yes	73 lbs.
PLF13P	13.3	7.0	Yes	No	1/4	4.4	500	Yes	Yes	80 lbs.
PLF13PL	13.3	7.0	Yes	No	1/4	4.4	500	Yes	Yes	70 lbs.
Free Standing Large Capacity Water Coolers										
PLF20FACP	20.0	11.0	Yes	No	1/2	7.3	830	Yes	No	91 lbs.
Free Standing Special Purpose Models										
P16FAWHDCP	15.5	8.4	Yes	No	1/3	5.2	600	Yes	No	97 lbs.
PLF16FAW	15.5	8.4	Yes	No	1/3	5.2	600	Yes	No	97 lbs.

*Air Conditioning and Refrigeration Institute Standard Rating Condition 80° F inlet water temperature.
 **Special export models available, operable on 220-240 volts, 50 Hertz. UL, CSA and ARI Certification not applicable.
 †Hot 'N Cold Model delivers 4 six-ounce cups of hot water per hour in addition to cold water.

On-A-Wall Coolers



NSF Certified
Models P8M,
PM and PCM



P8M



PLF4CM

Durable, economical coolers supply 4, 8 or 14 gallons of chilled drinking water per hour. Attractively styled unit is ideal wherever space is a consideration. Can be mounted at various heights to serve able-bodied and disabled drinkers as well as children.

Model PCM is a non-refrigerated fountain available with the same finishes as other Compact On-A-Wall models.

Standard Features

- > Waterways are Lead-Free in Materials and Construction
- > Dial-A-Drink® Bubbler
- > Stainless Steel Top
- > Welded, Heavy-Gauge Steel Frame
- > High-Efficiency Cooling Tank and Coil
- > Refrigerant R-134a
- > Limited 5 Year Warranty

Installation

- > Prior to Roughing-In, Consult Local, State and Federal Codes for Proper Mounting Height
- > Shipped with Complete Instructions and Wall Mounting Bracket
- > Removable Panels Provide Easy Access for Installation
- > Optional Steel Bracket Available for Stud/Masonry Walls

Colors

- > Standard Cabinet Finish in Sandstone. Optional Finishes in Stainless Steel, Regency Bronze and Various Powder Coat Colors.

Accessories

- > Glass Filler Kit for Field Installation (except Models PLF8MH, PLF14MH and Regency Bronze finish units)
- > Push Handle 029603-004
- > Push Back 029603-005
- > Push Down 029603-006

Model	50° F Drinking Water/90° F Ambient Air Temp*			Hot'N Cold™ Model	115 Volts, 60 HZ			Glass Filler Acc. Option	Cabinet Color Option	Net Wt. Approx.
	Rated Capacity GPH	Base Rate GPH	Pre-Cooler		Compr. HP	Full Load Amps	Rated Watts			
P8M	8.0	8.0	No	No	1/4	4.4	500	Yes	Yes	73 lbs.
PLF8MH†	8.0	8.0	No	Yes	1/5	8.9	900	No	Yes	77 lbs.
P14M**	14.0	7.8	Yes	No	1/4	4.4	500	Yes	Yes	76 lbs.
PLF14MH†	14.0	7.8	Yes	Yes	1/5	8.9	900	No	Yes	79 lbs.
PM	Fountain Only								Yes	35 lbs.
PLF4CM**	4.0	2.5	Yes	No	1/8	3.5	400	No	Yes	51 lbs.
PCM	Fountain Only							No	Yes	24 lbs.

*Air Conditioning and Refrigeration Institute Standard Rating Condition 80° F inlet water temperature. †Hot 'N Cold Model delivers 4 six-ounce cups of hot water per hour in addition to cold water.
**Special export models available, operable on 220-240 volts, 50 Hertz. UL, CSA and ARI Certification not applicable.

Barrier-Free Wall Mounted



Standard Features

- ADA Compliant for Adults when Properly Installed.
- Waterways are Lead-Free in Materials and Construction.
- Stainless Steel Top
- Flexible Bubbler Guard
- Heavy Duty Galvanized Steel Frame
- High-Efficiency Cooling Tank and Coil
- Refrigerant R-134a
- External Stream Height Adjustment
- Sandstone Powder Coat Finish Standard. Optional Finishes Available in Brushed Stainless Steel, Regency Bronze and Powder Coat in Various Colors.
- Three Push-Pad Activation.



Sandstone Powder Coat Finish



Brushed Stainless Steel

Model	50° F Drinking Water/90° F Ambient Air Temp*			Hot'N Cold™ Model	115 Volts, 60 HZ			Glass Filler Acc. Option	Cabinet Color Option	Net Wt. Approx.
	Rated Capacity GPH	Base Rate GPH	Pre-Cooler		Compr. HP	Full Load Amps	Rated Watts			
PLF8SKTP	8.0	8.0	No	No	1/5	4.4	500	No	Yes	67 lbs.

*Air Conditioning and Refrigeration Institute Standard Rating Condition 80° F inlet water temperature.

Drinking Fountains



F110PM



F100



F140PM



F140R



F120



F130PM



FLF202PM



F200PM



FLF201PM



F211PM



FLF231PM



F240PM



FLF221PM



F300R



F702PM



F703PM

Model	Style	Height	Width	Depth	Extended from Wall	Recessed into Wall
F100	Standard On-A-Wall	8 7/8"	17"	13 1/32"	13 1/32"	—
F110PM	Deluxe On-A-Wall	10 7/8"	13"	13 11/32"	13 11/32"	—
F120	Bracket Mounted On-A-Wall	9 3/16"	12 15/16"	13 3/32"	13 3/32"	—
F130PM	Simulated Semi-Recessed	27 3/4"	17 15/16"	9 1/2"	9 1/2"	—
F140R	Barrier Free	9 5/8"	14 1/2"	18 1/2"	18 1/2"	—
F140PM	Barrier Free	10 7/8"	13"	19"	19"	—
F200PM	Semi-Recessed	27 3/4"	17 5/16"	13"	9 1/2"	3 1/2"
F211PM	Fully Recessed	35"	18"	11"	1/2"	10 1/2"
F240PM	Inverted Fully Recessed	32 5/8"	18"	11"	1/2"	10 1/2"
F300R	Counter Top	3 1/2"	14"	14"	—	—
F702PM	Two Station	7 3/8"	39 5/8"	18 3/16"	18 3/16"	—
F703PM	Three Station	7 3/8"	59 5/32"	18 3/16"	18 3/16"	—
FLF201PM	Semi-Recessed	27 3/4"	17 5/16"	13"	9 1/2"	3 1/2"
FLF202PM	Semi-Recessed (each unit)	27 3/4"	17 5/16"	13"	9 1/2"	3 1/2"
FLF221PM	Fully Recessed	35"	18"	11"	1/2"	10 1/2"
FLF231PM	Fully Recessed (each unit)	35"	18"	11"	1/2"	10 1/2"

*Photos may not show standard bubbler. Check with customer service.

Accessories

> Vinyl Coated Bubbler



One Piece, Tamper-Proof, Vinyl Coated, Non-Regulated Bubbler for P8AC and Radii
Part 035607-108

> Solid Metal Bubbler



One Piece, Tamper-Proof, Chrome Plated Brass, Non-Regulated Bubbler for P8AC and Radii
Part 036700-001

> Adjustable Bubbler
(Chrome Plated Bubbler Guard)



Model 12000A Dial-A-Drink Adjustable Bubbler -Chrome Plated Brass
Part 030774-016 Model 12000A Part 030774-014 Model 12000AL

> Adjustable Bubbler
(Flexible Bubbler Guard)



Model 12000A Dial-A-Drink Adjustable Bubbler. -With Flexible Bubbler Guard
Part 030774-006 Model 12000A Part 030774-015 Model 12000AL

> Soft Touch Bubbler Handle



Soft Touch Bubbler Handle for the Handicapped. Optional Handle for Adjustable Bubbler Models 12000A and 12000AL.
Part 023754-001

> Oasis Drinking Water Filter Options

PF8AC VersaFilter System

VersaFilter System for Taste, Odor and Chlorine Reduction, Lead Reduction, and Cyst Reduction

Part 033926-001
Kit for P8AM and P8AC Series

Part 033879-001
Filter Cartridge Only for Replacement

Part 033879-001
Filter Cartridge Only for Replacement



> Trim Bezel



Trim Bezel fits OASIS P8AC Coolers. Available in Sandstone Powder Coat and Stainless Steel.
Part 035173-001 Sandstone Part 035173-003 Stainless Steel

> Aprons

Aprons will allow these models to comply with ADA guidelines when installed below upper unit. Not required when installed in an alcove or if a wing wall is installed on the right side.



Apron for P8ACSL



Part 035174-001 Sandstone
Part 035174-002 Greystone
Part 035174-003 Stainless Steel
Part 035174-004 Bronze Finish

Apron for M8SCPM, M8SCEE and MSSLPM



Part 032067-001 Stainless Steel
Part 032067-002 Bronze Finish

> Glass Fillers



Glass Fillers
Part 029603-006 Push Down (left)
Part 029603-005 Push Back (center)
Part 029603-004 Push Handle (right)

> Water Chillers



Standard Features of all Water Chillers

- > Waterways are Lead-Free in Materials and Construction
- > High Efficiency Stainless Steel Cooling Tank
- > Made of Heavy-Gauge Steel
- > Refrigerant R-134a
- > Limited 5 Year Warranty

Additional Features of the R1P

- > Delivers 0.8 Gallon of Chilled Drinking Water Per Hour.
- > Ideal for Under-sink or Remote Installations.
- > Waterways are All Stainless Steel.

Additional Features of the R5

- > Delivers 5.0 Gallons of Chilled Water Per Hour, Respectively.
- > Easy to Install, and May be Used to Serve Multiple Drinking Fountains.

Additional Features of the R8 and R12

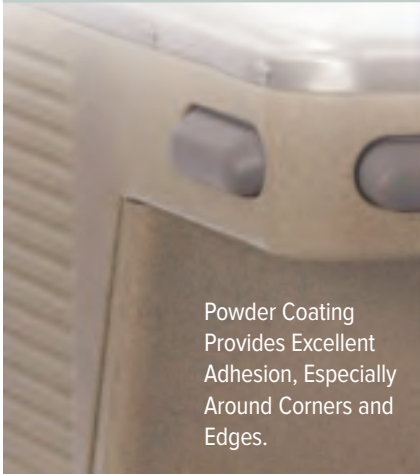
- > Delivers 8.0 and 12.0 Gallons of Chilled Water Per Hour, Respectively.
- > Designed for Remote or In-A-Wall Installation.
- > Shelf Support, Wall Mounting Cradle and Stainless Steel Ventilating Grille at Extra Cost.



Model	50° F Drinking Water/90° F Ambient Air Temp*		115 Volts, 60 HZ			Net Wt. Approx.
	Rated Capacity GPH	Compr.HP	Full Load Amps	Rated Watts		
R1P**	.8	1/20	1.2	135	30 lbs.	
R5**	5.0	1/5	3.6	415	50 lbs.	
R8**	8.0	1/4	4.8	550	52 lbs.	
R12**	12.0	1/3	5.4	620	52 lbs.	

*Air Conditioning and Refrigeration Institute Standard Rating Condition 80°F inlet water temp. **All Models are Available for export, operable on 220-240 volts, 50 Hertz. UL and CSA Certification not applicable.

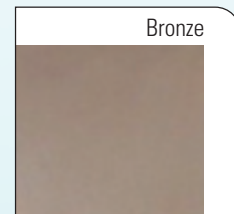
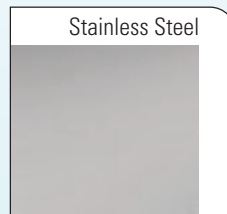
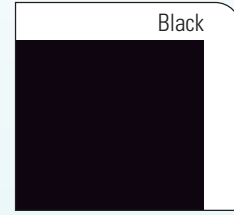
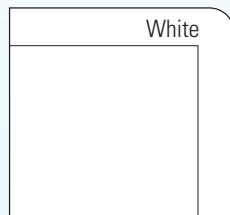
Oasis Finish Options



New Generation Surface Technology in a Wide Variety of Colors

Powder coating on galvanized steel gives our product significantly greater durability, which translates into lower life cycle cost. The coating, a mixture of finely ground particles of pigment and resin, is sprayed and baked on for complete coverage and strong adhesion. The finish resists cracking, corrosion, scratches, fading, impact and abrasion. And on top of all that, it's beautiful!

Color and finishes to match your decor.



Oasis Pressure Cooler Classification Legend



Significantly more water and energy efficient.



Components in this fountain are lead free as defined by the Safe Drinking Water Act Amendments of 1986, and the Lead Contamination Control Act of 1988.



Product Certified to NSF/ANSI Standard 61, Annex G (weighted average lead content of $\leq 0.25\%$) and is in compliance with California's Health & Safety Code Section 116875 (commonly known as AB1953).



ADA Compliant when properly installed.

OASIS WARRANTY INFORMATION

Refrigerated Models

Limited 5 Year Warranty (Continental limits of the United States and Canada): Five years on the sealed refrigeration system and most component parts. Detailed warranty certificate enclosed with each water cooler; sample copy available upon request.

Fountains and Cuspidors

One Year Parts Warranty Only

Accessory Warranty

The manufacturer warrants the accessory to be free from defects in material and workmanship under normal use and service for a period of one year from date of original installation. The manufacturer's obligation shall be limited to repairing or replacing any inoperative part, which upon manufacturer's examination discloses to be defective in material and workmanship. Labor charges to remove and reinstall any inoperative part in the field is the responsibility of the owner.

We're ready to help you with all your pressure cooler needs...

For Customer Service call: 800.646.2747
Local phone: 614-861-1350 | Fax: 614-322-4557
Oasis International | 222 East Campus View Blvd. | Columbus, OH 43235
email: info@oasiscoolers.com | web: oasiscoolers.com

